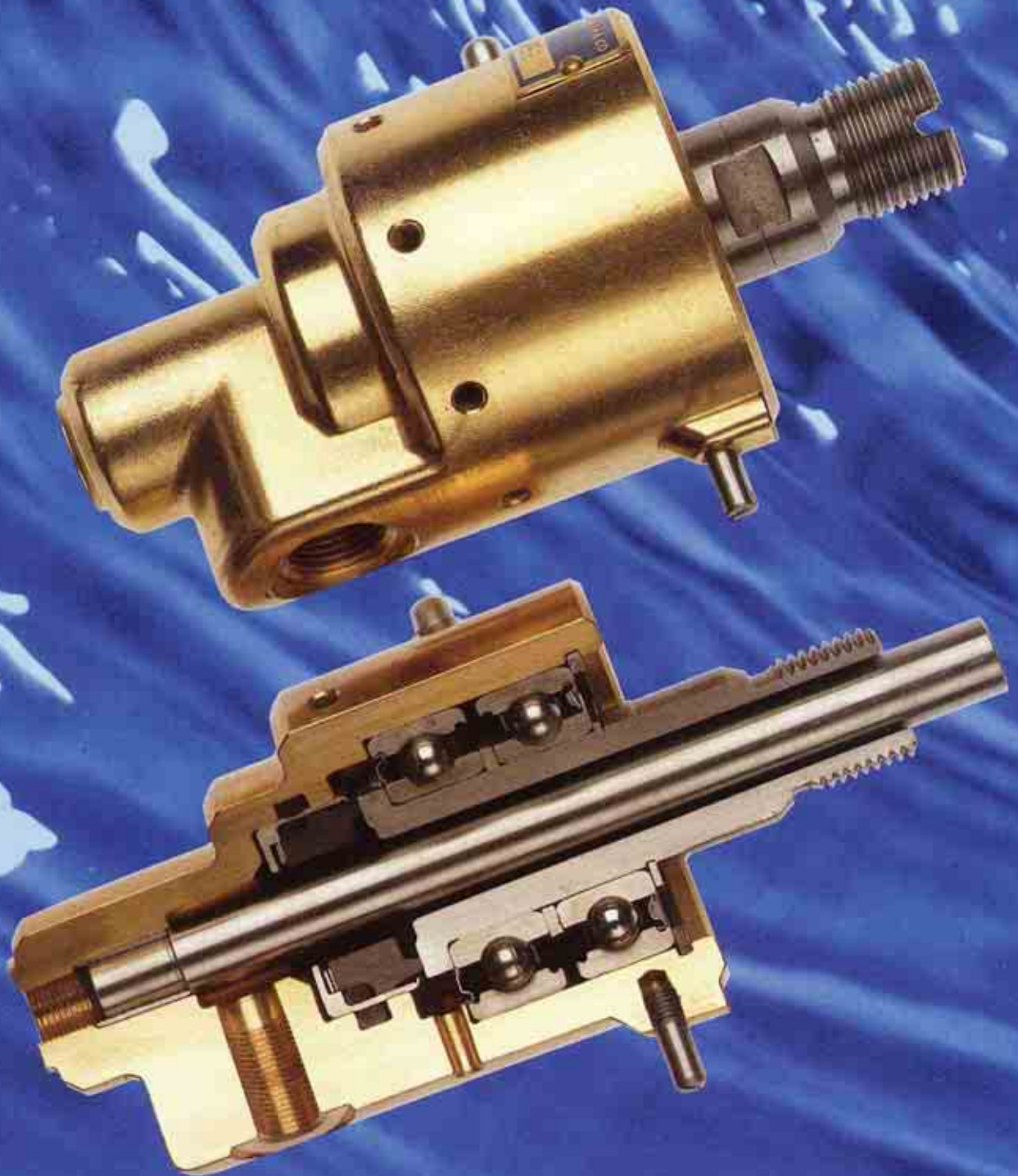


Series DX + DXS



DX/DXS Rotary Joints

are suitable for

- cooling water (DX/DXS) and hot water (DXS).

■ Advantages are

- Versions for Monoflow and Duoflow. Hence, the hose connections are optimised.
- Easy to repair.
- Universally approved in the textile, plastic and paper industry.
- High security for critical applications.

■ Housing made of brass; diameters DN 100 and above and all DXSA models have a two-part housing made of steel.

■ Rotor and running surface made of chrome steel. DXS and DXSA running surfaces with metal-ceramics.

■ Compact mechanical seal; DXS (diameters DN 100 and above) and DXSA mechanical seals are relieved from pressure.

■ Two ball bearings; tapered roller bearings for higher loads; bearings are factory-lubricated and maintenance-free up to 80 °C; easily accessible lubrication nipple for higher temperatures.

■ Connection to rotating pressure system by means of:

- standard connecting piece with right-hand or left-hand male thread BSP (ISO 228).
- Sealing and centering cone at end of thread. Adapter pieces for NPT and other threads are available.
- K flange with conical inner ring.
- Fixed flange (F) for design DXSA.

■ Radial and axial housing connection with right-hand thread BSP (ISO 228). Adapter pieces for NPT and other threads are available. DXSA (DN 32 to 100) is also available with screwed flange; DXS and DXSA (DN 125 and above) with welded flange DIN 2633.

Thread for fixed inner pipe always right-hand even with left-hand thread at rotor (design 2).

■ Combined slide bearing and gland seal for rotating inner pipes. Static bearing for rotating inner pipe (not supplied with rotary joint) in the rotor; additional sealings for complete isolation of flow and return.

■ Prevention of housing rotation by means of locking pin or locking fork (DN 100 and above as well as DXSA models).

■ For safety reasons, it is absolutely necessary when using 10 bar and above to protect the rotary joint by a frame or a cage in order to prevent loosening of housing from rotor at an unforeseen incident.

DXSB Design Features

■ The rotating inner pipe locates within the rotating rotor. Hence, it rotates together with the rotor. Consequently no wear takes place in this area. The cylinder design can thus be made simpler.

■ Rotor seal is interchangeable. Consequently economical repair.

DXSA Design Features

■ As DXSB, however, equipped with heavy duty bearings.

■ Between inlet and outlet a seal ensures separation of flow.

Application data

		DX	DXS	DXS	DXS/DXSA	DXSB
Design		1,2, R2	1,2	R2	1,2, A2	B2
Nominal diameter DN	mm	10...80	10...80	10...80	32...150	50...100
Medium		cooling water	cooling water hot water	cooling water hot water	cooling water hot water steam	cooling water hot water
Temperature	min...max °C	-15...80	-15...150	-15...150	-15...160	-15...160
Pressure PN	min...max bar	0,2...8	0,2...8	0,2...8	0,2...10	0,2...10
Speed	max...min ⁻¹	<u>50000</u> DN	<u>55000</u> DN	<u>50000</u> DN	<u>55000</u> DN	<u>55000</u> DN

The combination of maximum values should be avoided. Designs for higher values and other media upon request.

Ordering instructions

Example:

DX	S	A	2	150	F	- 100
----	---	---	---	-----	---	-------

Series DX

S Metal ceramics for hot water and steam

R Design for rotating inner pipe with slide bearing and gland seal
 A with completely isolated flow and return
 B for static innerpipe within the rotor

Number of housing connections
 1 for one way flow design
 2 for two way flow design
 3* for two way flow design with vacuum valve
 * only upon request

Nominal diameters DN in mm (≙ dimension A)
 10, 15, 20, 25, 32, 40, 50, 65, 80, 100, 125, 150

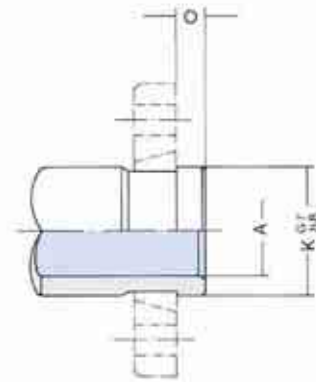
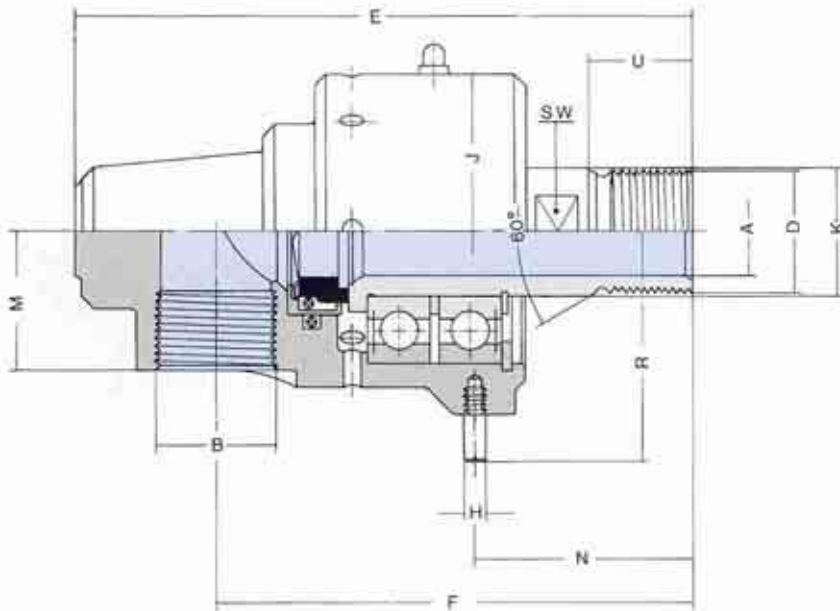
R Rotor connection right-hand thread
 L left-hand thread
 K K flange
 F fixed flange
 adapter pieces are available for other threads.

Consecutive numbers for special designs, numbering by factory.

DX1 + DXS1

for one way flow of a medium

DN 10-80



Flanges see page 74

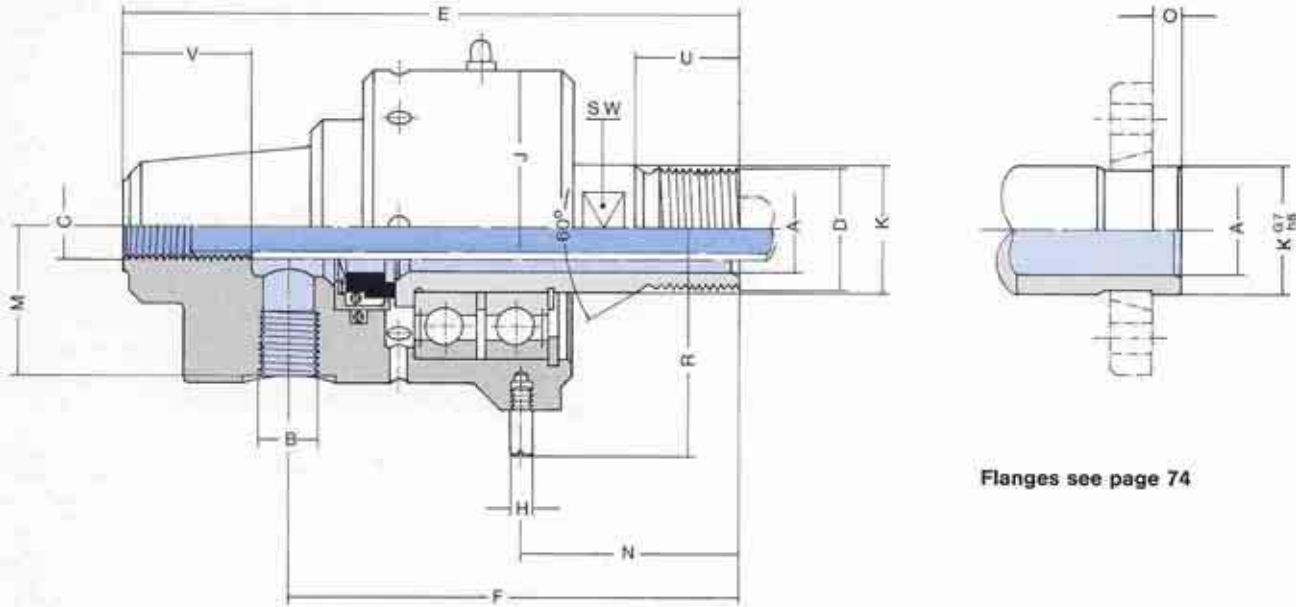
	DN	10	15	20	25	32	40	50	65	80
DX	Type	DX 110 R	DX 115 R	DX 120 R	DX 125 R	DX 132 R	DX 140 R	DX 150 R	DX 165 R	DX 180 R
	Order-No.	1106000	1106050	1106100	1106150	1106200	1106250	1106300	1106350	1106400
	Type	DX 110 L	DX 115 L	DX 120 L	DX 125 L	DX 132 L	DX 140 L	DX 150 L	DX 165 L	DX 180 L
DXS	Order-No.	1106001	1106051	1106101	1106151	1106201	1106251	1106301	1106351	1106401
	Type	DX 110 K	DX 115 K	DX 120 K	DX 125 K	DX 132 K	DX 140 K	DX 150 K	DX 165 K	DX 180 K
	Order-No.	1106002	1106052	1106102	1106152	1106202	1106252	1106302	1106352	1106402
DXS	Type	DXS 110 R	DXS 115 R	DXS 120 R	DXS 125 R	DXS 132 R	DXS 140 R	DXS 150 R	DXS 165 R	DXS 180 R
	Order-No.	1105000	1105075	1105150	1105225	1105300	1105375	1105450	1105525	1105600
	Type	DXS 110 L	DXS 115 L	DXS 120 L	DXS 125 L	DXS 132 L	DXS 140 L	DXS 150 L	DXS 165 L	DXS 180 L
DXS	Order-No.	1105001	1105076	1105151	1105226	1105301	1105376	1105451	1105526	1105601
	Type	DXS 110 K	DXS 115 K	DXS 120 K	DXS 125 K	DXS 132 K	DXS 140 K	DXS 150 K	DXS 165 K	DXS 180 K
	Order-No.	1105002	1105077	1105152	1105227	1105302	1105377	1105452	1105527	1105602

Ø A	10	13	20	25	32	38	50	66	81
B	G 3/8	G 1/2	G 3/4	G 1	G 1 1/4	G 1 1/2	G 2	G 2 1/2	G 3
D	G 3/8 A	G 1/2 A	G 3/4 A	G 1 A	G 1 1/4 A	G 1 1/2 A	G 2 A	G 2 1/2 A	G 3 1/2 A
E	118	138	150	167	207	226	273	312	377
F	94	110	118	129	156	167	201	225	278
Ø H	5	5	5	6	6	8	8	10	10
Ø J	54	65	75	85	105	115	143	170	222
Ø K	20	25	30	35	48	52	68	84	108
Ø K G7/h8	18	24	30	35	45	50	65	85	105
M	24	29	33	37	45	49	61	70	96
N	42	48	50	59	68	75	92	100	125
O	6	6	8	8	8	10	10	10	12
R	43	48	53	63	73	83	97	114	140
U	19	23	23	28	33	36	43	48	54
SW	17	22	27	30	41	46	60	75	95
Weight (kg)	0,9	1,5	2	2,6	4,9	6,4	11	17,8	35,5

DX2 + DXS2

for two way flow of a medium
designed for non-rotating inner pipes

DN 10-80



Flanges see page 74

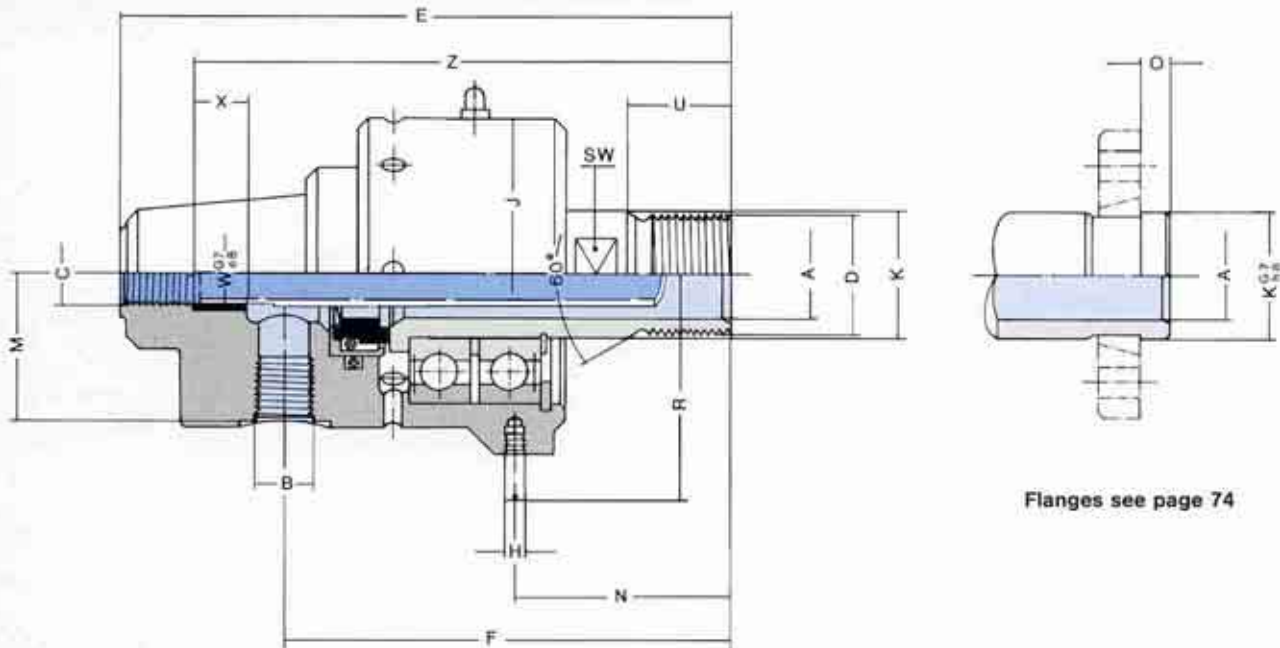
	DN	10	15	20	25	32	40	50	65	80
DX	Type	DX 210 R	DX 215 R	DX 220 R	DX 225 R	DX 232 R	DX 240 R	DX 250 R	DX 265 R	DX 280 R
	Order-No.	1106003	1106053	1106103	1106153	1106203	1106253	1106303	1106353	1106403
	Type	DX 210 L	DX 215 L	DX 220 L	DX 225 L	DX 232 L	DX 240 L	DX 250 L	DX 265 L	DX 280 L
DXS	Order-No.	1106004	1106054	1106104	1106154	1106204	1106254	1106304	1106354	1106404
	Type	DXS 210 R	DXS 215 R	DXS 220 R	DXS 225 R	DXS 232 R	DXS 240 R	DXS 250 R	DXS 265 R	DXS 280 R
	Order-No.	1105004	1105079	1105154	1105229	1105304	1105379	1105454	1105529	1105604
DXS	Type	DXS 210 L	DXS 215 L	DXS 220 L	DXS 225 L	DXS 232 L	DXS 240 L	DXS 250 L	DXS 265 L	DXS 280 L
	Order-No.	1105005	1105080	1105155	1105230	1105305	1105380	1105455	1105530	1105605
	Type	DXS 210 K	DXS 215 K	DXS 220 K	DXS 225 K	DXS 232 K	DXS 240 K	DXS 250 K	DXS 265 K	DXS 280 K
Order-No.	1105006	1105081	1105156	1105231	1105306	1105381	1105456	1105531	1105606	

Ø A	10	13	20	25	32	38	50	66	81
B	M 8 x 0,5	G 1/8	G 1/4	G 3/8	G 1/2	G 3/4	G 1	G 1 1/2	G 2
C	M 8 x 0,5	G 1/8	G 1/4	G 3/8	G 1/2	G 3/4	G 1	G 1 1/2	G 2
D	G 3/8 A	G 1/2 A	G 3/4 A	G 1 A	G 1 1/4 A	G 1 1/2 A	G 2 A	G 2 1/2 A	G 3 1/2 A
E	118	138	150	167	207	226	273	312	377
F	92	106	114	124	149	162	192	215	268
Ø H	5	5	5	6	6	8	8	10	10
Ø J	54	65	75	85	105	115	143	170	222
Ø K	20	25	30	35	48	52	68	84	108
Ø K G7/h8	18	24	30	35	45	50	65	85	105
M	26	31	36	40	50	54	68	80	105
N	42	48	50	59	68	75	92	100	125
O	6	6	8	8	8	10	10	10	12
R	43	48	53	63	73	83	97	114	140
U	19	23	23	28	33	36	43	48	54
V	20	25	30	35	45	50	60	70	80
SW	17	22	27	30	41	46	60	75	95
Weight (kg)	0,8	1,4	1,9	2,5	4,8	6,2	10,8	17,5	35

DXR2 + DXSR2

for two way flow of a medium
designed for rotating inner pipe

DN 15-80



Flanges see page 74

	DN	15	20	25	32	40	50	65	80
DX	Type	DXR 215 R	DXR 220 R	DXR 225 R	DXR 232 R	DXR 240 R	DXR 250 R	DXR 265 R	DXR 280 R
	Order-No.	1106056	1106106	1106156	1106206	1106256	1106306	1106356	1106406
	Type	DXR 215 L	DXR 220 L	DXR 225 L	DXR 232 L	DXR 240 L	DXR 250 L	DXR 265 L	DXR 280 L
	Order-No.	1106057	1106107	1106157	1106207	1106257	1106307	1106357	1106407
DXS	Type	DXSR 215 R	DXSR 220 R	DXSR 225 R	DXSR 232 R	DXSR 240 R	DXSR 250 R	DXSR 265 R	DXSR 280 R
	Order-No.	1105083	1105158	1105233	1105308	1105383	1105458	1105533	1105608
	Type	DXSR 215 L	DXSR 220 L	DXSR 225 L	DXSR 232 L	DXSR 240 L	DXSR 250 L	DXSR 265 L	DXSR 280 L
	Order-No.	1105084	1105159	1105234	1105309	1105384	1105459	1105534	1105609
	Type	DXSR 215 K	DXSR 220 K	DXSR 225 K	DXSR 232 K	DXSR 240 K	DXSR 250 K	DXSR 265 K	DXSR 280 K
	Order-No.	1105085	1105160	1105235	1105310	1105385	1105460	1105535	1105610

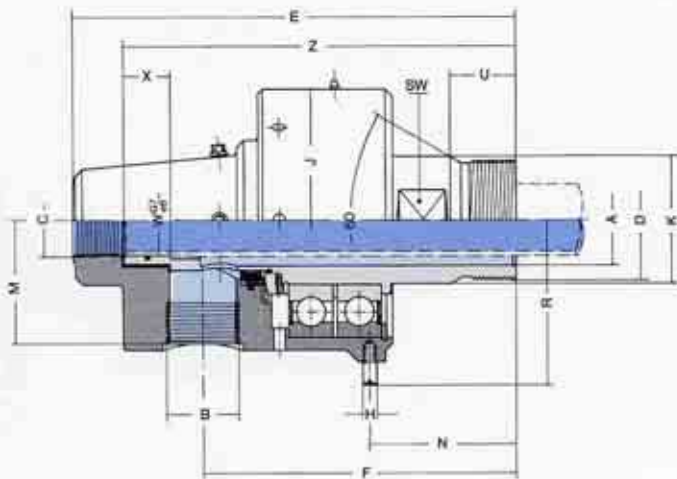
Ø A	13	20	25	32	38	50	66	81
B	G 1/8	G 1/4	G 3/8	G 1/2	G 3/4	G 1	G 1 1/2	G 2
C	G 1/8	G 1/4	G 3/8	G 1/2	G 3/4	G 1	G 1 1/2	G 2
D	G 1/2 A	G 3/4 A	G 1 A	G 1 1/4 A	G 1 1/2 A	G 2 A	G 2 1/2 A	G 3 1/2 A
E	138	150	167	207	226	273	312	377
F	106	114	124	149	162	192	215	268
Ø H	5	5	6	6	8	8	10	10
Ø J	65	75	85	105	115	143	170	222
Ø K	25	30	35	48	52	68	84	108
Ø K G7/h8	24	30	35	45	50	65	85	105
M	31	36	40	50	54	68	80	105
N	48	50	59	68	75	92	100	125
O	6	8	8	8	10	10	10	12
R	48	53	63	73	83	97	114	140
U	23	23	28	33	36	43	48	54
Ø W G7/e8	10	12	16	20	25	31,8	45	60
X	15	15	15	15	25	25	30	40
Z	128	135	147	177	201	238	272	337
SW	22	27	30	41	46	60	75	95
Weight (kg)	1,5	2,1	2,8	5,1	6,5	11,5	18,2	36,5

DXSB2

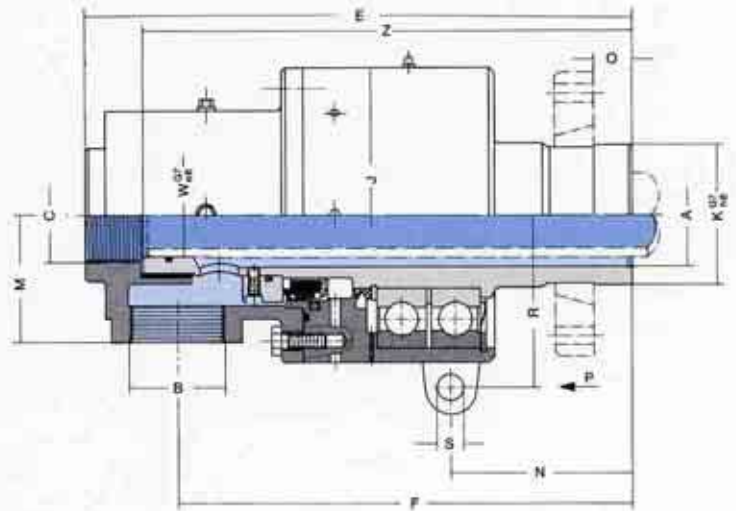
for two way flow of a medium
designed for rotating inner pipe

DN 50-100

Nominal diameter DN 50 80

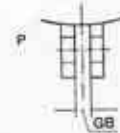


Nominal diameter DN 100



Welded flange upon request available.

DN	50	65	80	100
Typ	DXSB 250 R	DXSB 265 R	DXSB 280 R	
Order-No.	1105466	1105541	1105616	
Typ	DXSB 250 L	DXSB 265 L	DXSB 280 L	
Order-No.	1105467	1105542	1105617	
Typ	DXSB 250 K	DXSB 265 K	DXSB 280 K	DXSB 2100 K
Order-No.	1105468	1105543	1105618	1105693



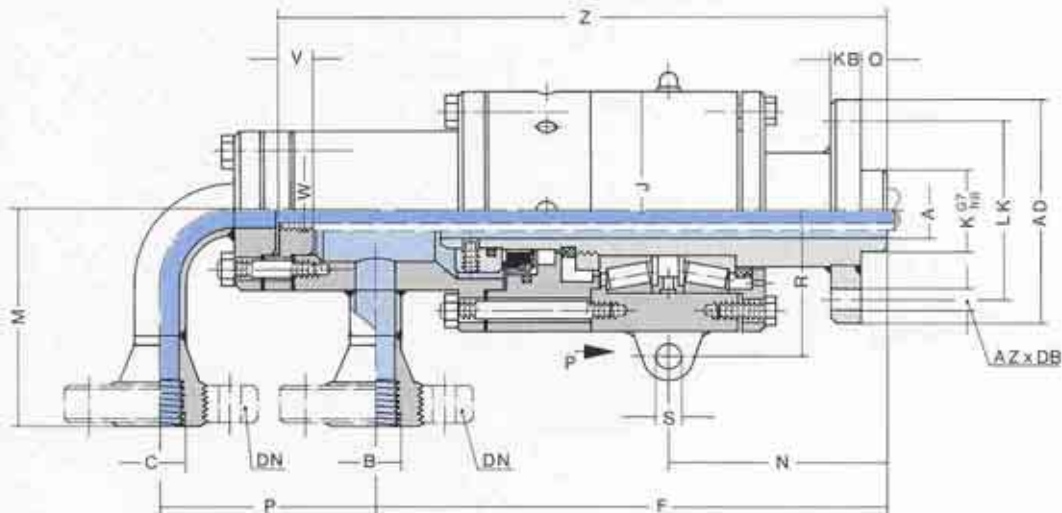
Sight P

Ø A	49	63	78	96
B	G 1¼	G 1½	G 2	G 2½
C	G 1¼	G 1½	G 2	G 2½
D	G 2 A	G 2½ A	G 3½ A	-
E	271	312	377	420
F	192	215	268	350
Ø H	8	10	10	-
Ø J	143	170	222	244
Ø K	68	84	108	-
Ø K G7/h8	65	85	105	114
M	65	80	105	110
N	92	100	125	155
O	25	25	30	30
R	97	114	140	140
S	-	-	-	20
U	43	48	54	-
ØW G7/e8	37	45	60	75
X	35	40	40	40
Z	243	274	334	376
GB	-	-	-	26
SW	60	75	95	-
Weight (kg)	12	19	40	50

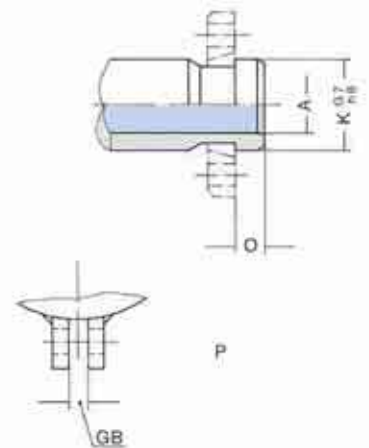
DXS2

for two way flow of a medium
designed for non-rotating inner pipes

DN 100-150



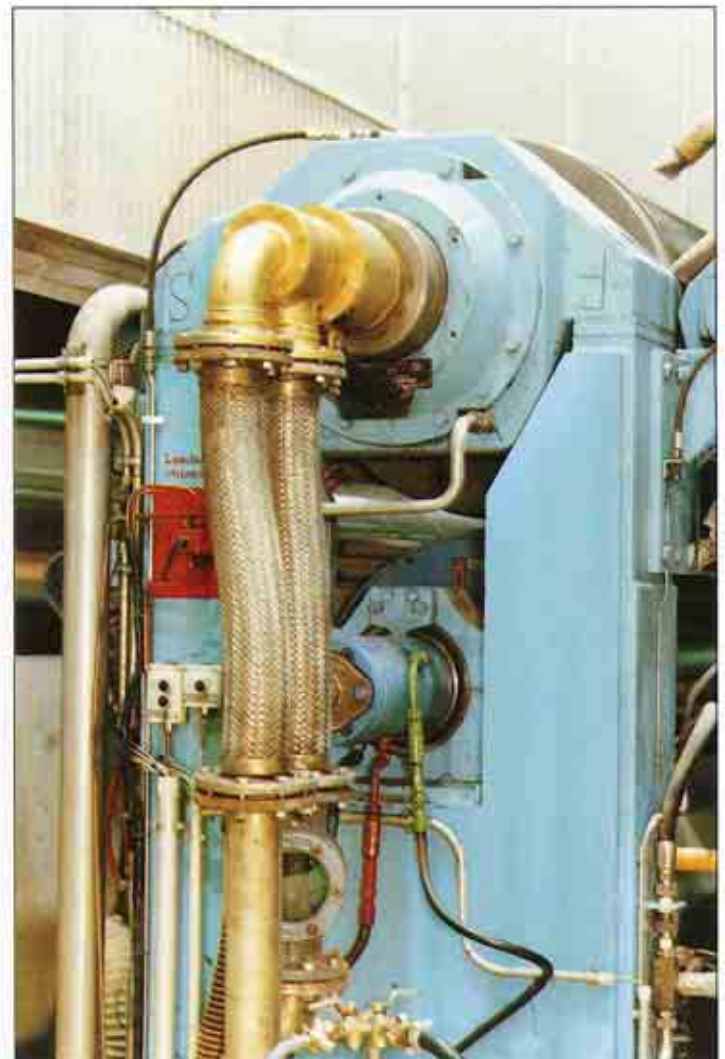
Flanges see pages 74



DN	100	125	150
Type	DXS 2100 K	DXS 2125 K	DXS 2150 K
Order-No.	1105681	1105756	1105831
Type	DXS 2100 F	DXS 2125 F	DXS 2150 F
Order-No.	1105682	1105757	1105832
Type			
Order-No.			
Type			
Order-No.			
Type			
Order-No.			

Ø A	98	120	145
B	G 3 - DN 80	DN 100	DN 125
C	G 3 - DN 80	DN 100	DN 125
F	415	485	540
Ø J	260	310	350
Ø K G7/h8	114	150	180
M	210	235	260
N	170	200	220
O	30	35	40
P	240	290	350
R	140	170	195
S	20	25	25
V	40	50	60
Ø W	G 2)	G 3	G 4
Z	515	590	660
Ø AD	230	250	300
AZ x Ø DB	8 x 18	8 x 18	8 x 22
GB	26	30	35
KB	30	35	40
Ø LK	195	210	255

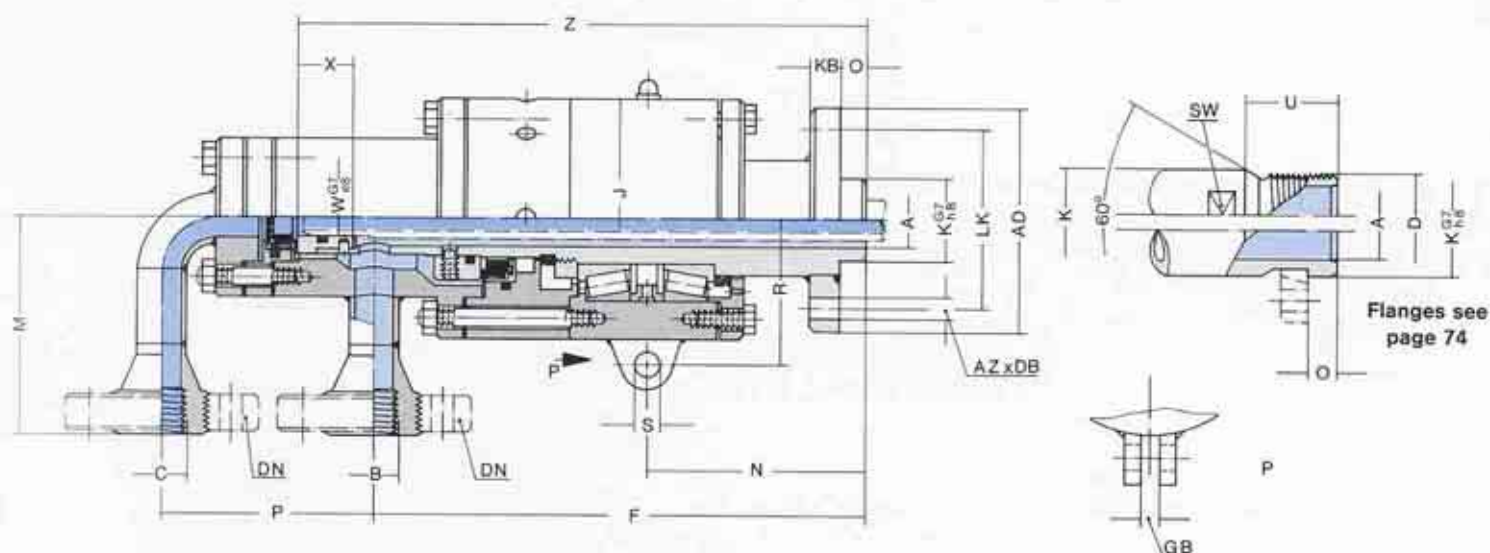
For DN 100: Flanges with thread, see page 77.



DXSA2

for two way flow of a medium
designed for rotating inner pipe

DN 32-150



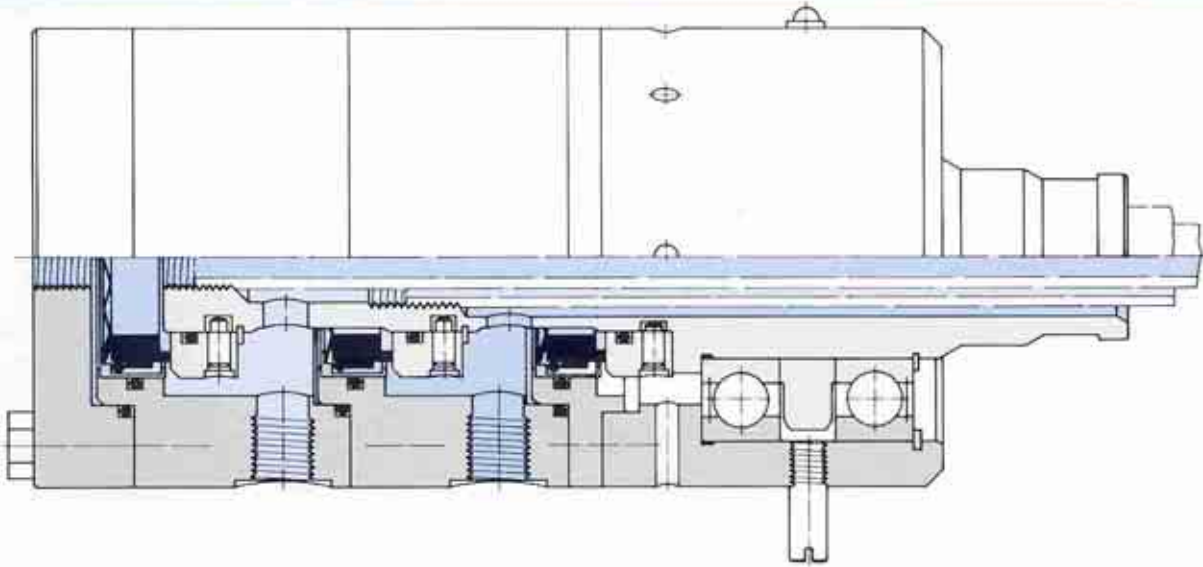
DN	32	40	50	65	80	100	125	150
Type	DXSA 232 R	DXSA 240 R	DXSA 250 R	DXSA 265 R	DXSA 280 R			
Order-No.	1105312	1105387	1105462	1105537	1105612			
Type	DXSA 232 L	DXSA 240 L	DXSA 250 L	DXSA 265 L	DXSA 280 L			
Order-No.	1105313	1105388	1105463	1105538	1105613			
Type	DXSA 232 K	DXSA 240 K	DXSA 250 K	DXSA 265 K	DXSA 280 K	DXSA 2100 K	DXSA 2125 K	DXSA 2150 K
Order-No.	1105314	1105389	1105464	1105539	1105614	1105689	1105764	1105839
Type	DXSA 232 F	DXSA 240 F	DXSA 250 F	DXSA 265 F	DXSA 280 F	DXSA 2100 F	DXSA 2125 F	DXSA 2150 F
Order-No.	1105315	1105390	1105465	1105540	1105615	1105690	1105765	1105840
Type								
Order-No.								
Type								
Order-No.								

Ø A	32	38	50	66	81	98	120	145
B (PN 16)	G 1-DN 25	G 1¼-DN 32	G 1½-DN 40	G 2-DN 50	G 2½-DN 65	G 3-DN 80	DN 100	DN 125
C (PN 16)	G 1-DN 25	G 1¼-DN 32	G 1½-DN 40	G 2-DN 50	G 2½-DN 65	G 3-DN 80	DN 100	DN 125
D	G 1½ A	G 2 A	G 2½ A	G 3 A	G 4 A	-	-	-
F	270	290	320	360	415	415	485	540
Ø J	132	149	175	195	231	260	310	350
Ø K	52	68	84	97	118	-	-	-
Ø K G7/h8	45	50	65	85	105	114	150	180
M	120	130	145	165	190	210	235	260
N	105	120	135	150	180	170	200	220
O	15	20	25	25	30	30	35	40
P	135	160	170	180	220	240	290	350
R	80	90	105	115	135	140	170	195
S	15	15	18	18	20	20	25	25
U	36	43	48	50	66	-	-	-
Ø W G7/e8	24	29	37	45	58	75	88	110
X	35	40	40	40	45	45	50	60
Z	326	358	385	413	487	493	565	631
Ø AD	120	135	155	180	210	230	250	300
AZ x Ø DB	6 x 14	6 x 14	8 x 14	4 x 18	6 x 18	8 x 18	8 x 18	8 x 22
GB	16	16	18	20	22	26	30	35
KB	15	18	20	25	30	30	35	40
Ø LK	95	110	125	145	175	195	210	255
SW	46	60	75	85	110	-	-	-

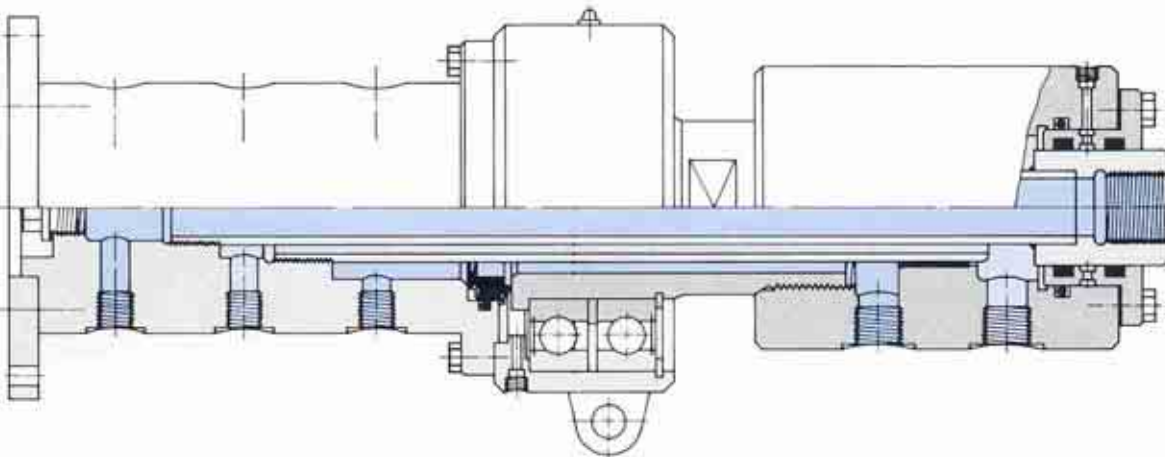
For DN 32 to DN 100: Flanges with thread see page 77.

Examples

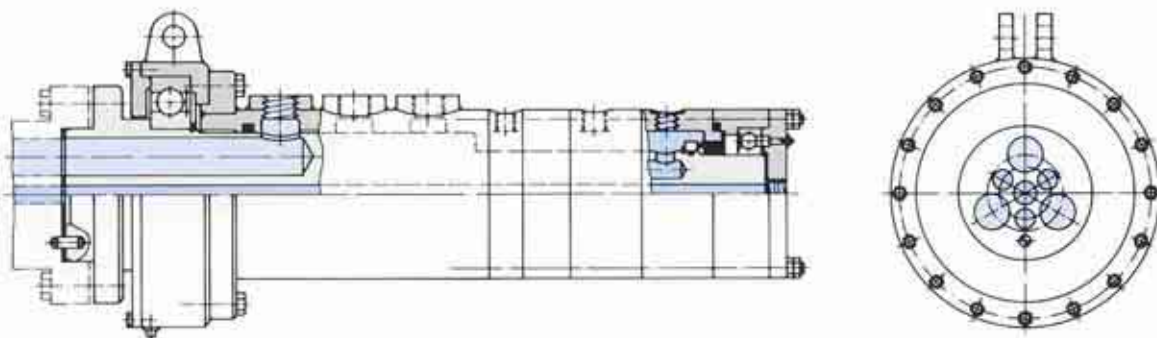
of special designs



DXSA 232 K-14: Rotary joint with 3 connections for several media.



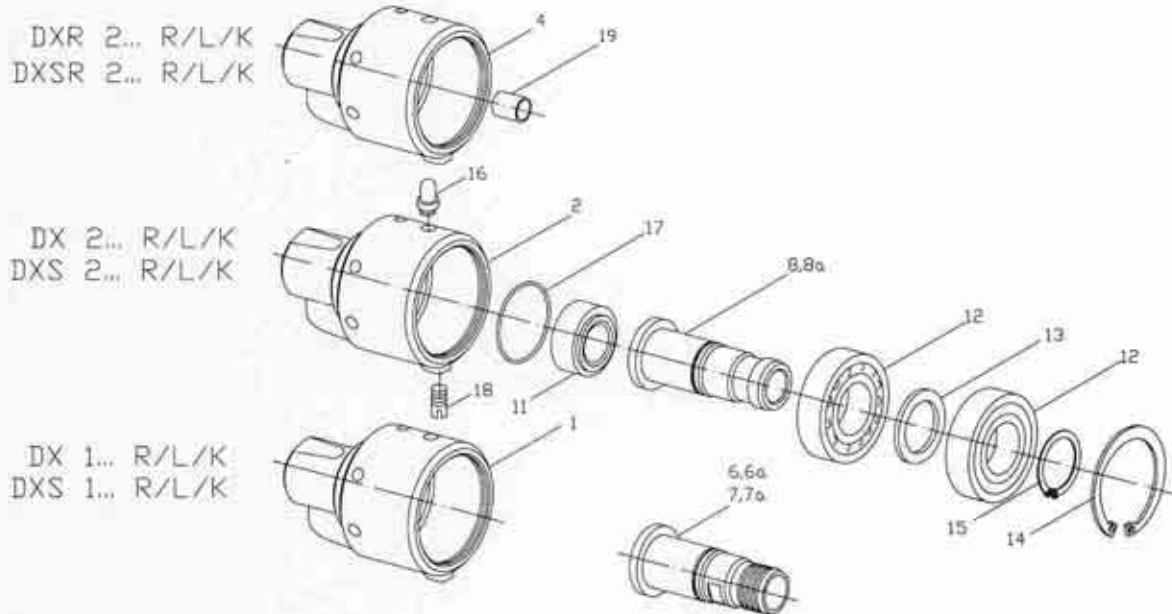
DX 280L-17: Rotary joint with distributor for turntables.



DXR 7125K-6: Rotary joint with 7 connections for several media.
Additional designs upon request.

Spare parts

for design DX1, DX2, DXR2 + DXS1, DXS2, DXSR2



	DN	10	15	20	25	32	40	50	65	80
1	Housing 1	1106010	1106060	1106110	1106160	1106210	1106260	1106310	1106360	1106410
2	Housing 2	1106011	1106061	1106111	1106161	1106211	1106261	1106311	1106361	1106411
4	Housing R 2	-	1106062	1106112	1106162	1106212	1106262	1106312	1106362	1106412
6	Rotor R	1106015	1106065	1106115	1106165	1106215	1106265	1106315	1106365	1106415
6a	Rotor SR	1106015-023	1106065-023	1106115-023	1106165-023	1106215-023	1106265-023	1106315-023	1106365-023	1106415-023
7	Rotor L	1106016	1106066	1106116	1106166	1106216	1106266	1106316	1106366	1106416
7a	Rotor SL	1106016-023	1106066-023	1106116-023	1106166-023	1106216-023	1106266-023	1106316-023	1106366-023	1106416-023
8	Rotor K	1106017	1106067	1106117	1106167	1106217	1106267	1106317	1106367	1106417
8a	Rotor SK	1106017-022	1106067-022	1106117-022	1106167-022	1106217-022	1106267-022	1106317-022	1106367-022	1106417-022
11	Mechanical seal	1501010-001	1501015-001	1501020-001	1501025-001	1501035-001	1501040-001	1501055-001	1501070-001	1501085-001
12	Ball bearing	3510200	3510201	3510202	3510203	3510204	3510205	3510206	3510207	3510208
13	Support ring	3510215	3510216	3510217	3510218	3510219	3510220	3510221	3510222	3510223
14	Circlip	3501220	3501232	3501222	3501223	3501221	3501206	3501207	3501237	3501238
15	Circlip	3501000	3501001	3501002	3501003	3501014	3501023	3501024	3501026	3501006
16	Lubricat. nipple	3500918	3500918	3500918	3500918	3500918	3500918	3500918	3500918	3500918
17	O-ring	3511875	3511876	3511877	3511878	3511879	3511880	3511881	3511882	3511883
18	Shaft screw	3500675	3500675	3500675	3500676	3500676	3500677	3500677	3500678	3500678
19	Slide bearing	-	3510502	3510504	3510506	3510501	3510509	3510512	3510514	3510523

Rotary Joints Type DX have standard rotors position No. 6,7,8.

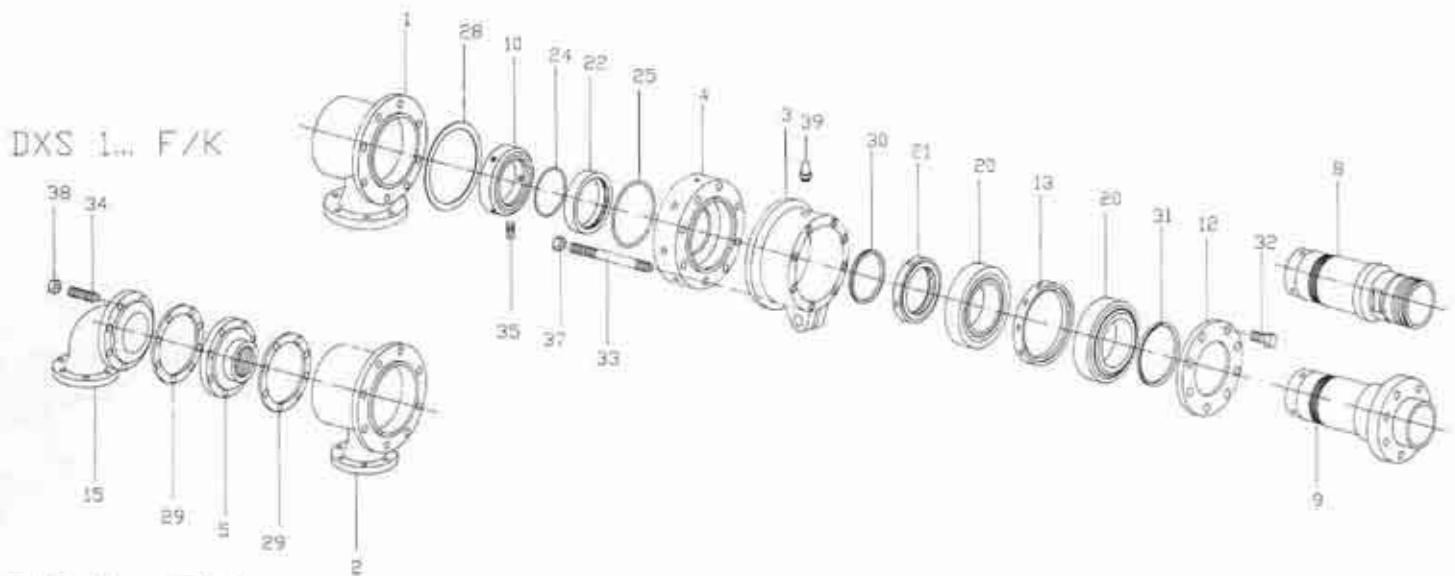
Rotary Joints Type DXS have coated rotors positions No. 6a,7a,8a.

Rotors of Type DXS can be built into Rotary Joints Type DX in order to give longer life.

Please specify exact type designation when inquiring or ordering!

Spare parts

for design DX1, DX2

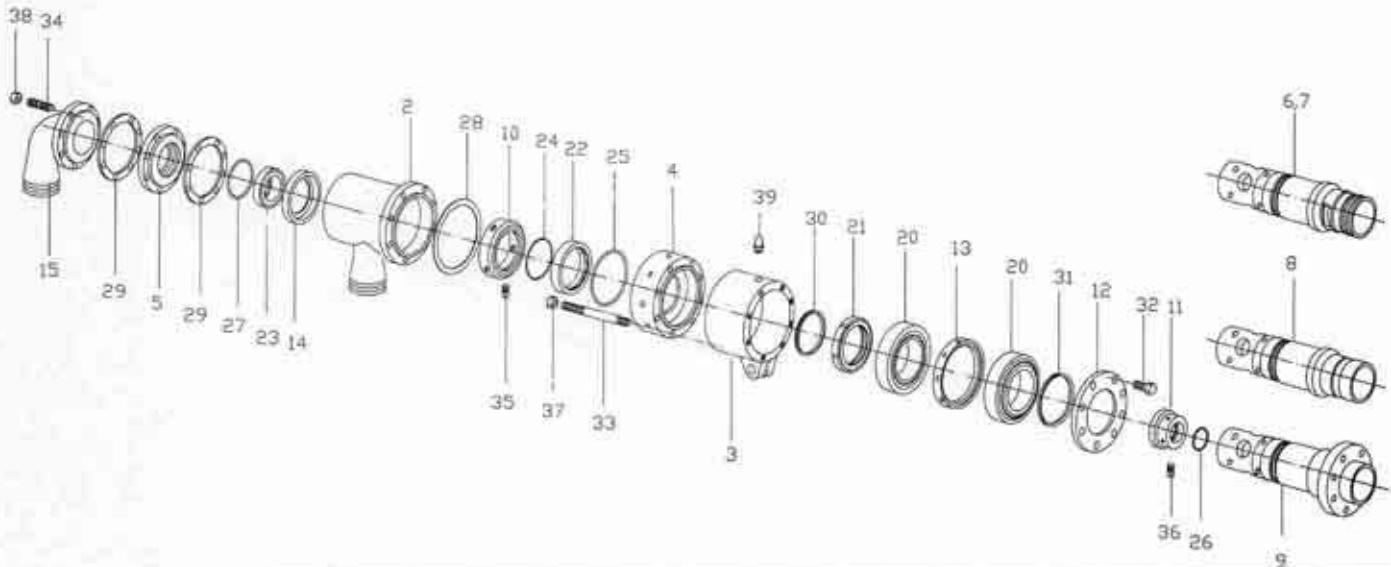


	DN	100	125	150
1	Housing 1	1105700	1105775	1105850
2	Housing 2	1105701	1105776	1105851
3	Bearing housing	1105706	1105781	1105856
4	Seal housing	1105725	1105800	1105875
5	Intermed. ring	1105723	1105798	1105873
8	Rotor K	1105717	1105792	1105867
9	Rotor F	1105718	1105793	1105868
10	Antirrotat. ring	1105727	1105802	1105877
12	Cover	1105730	1105805	1105880
13	Distancer	1105732	1105807	1105882
15	Elbow	1105735	1105810	1105885
20	Tap. roll. bearing	3510040	3510041	3510042
21	Groove nut, sec.	3513505	3513506	3513507
22	Mechanical seal	1501120-001	1501150-001	1501170-001
24	O-ring f. pos. 10	3511819	3511821	3511743
25	O-ring f. pos. 22	3511897	3511895	3511893
28	Flat packing	1105740	1105815	1105890
29	Flat packing	1105741	1105816	1105891
30	Shaft seal	3511984	3511986	3511988
31	Shaft seal	3511987	3511988	3511989
32	Hex screw	3500165	3500192	3500194
33	Stud bolt	3500268	3500269	3500270
34	Stud bolt	3500262	3500266	3500267
35	Set screw	3500521-002	3500521-002	3500521-002
37	Hex nut	3500287	3500287	3500287
38	Hex nut	3500285	3500287	3500287
39	Lubric. nipple	3500918	3500918	3500918

Please specify exact type designation when inquiring or ordering!

Spare parts

for design DXSA2

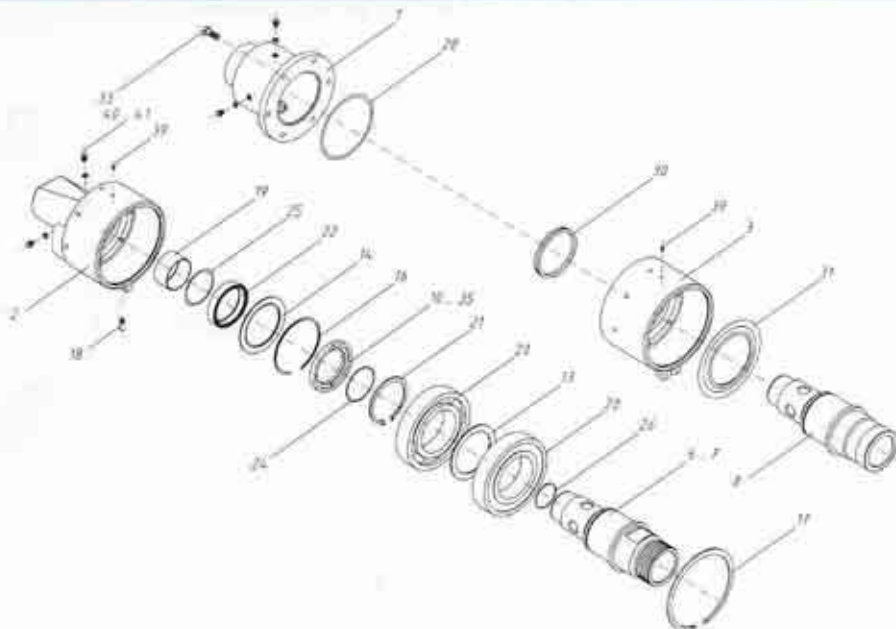


DN	32	40	50	65	80	100	125	150
2 Housing 2	1105326	1105401	1105476	1105551	1105626	1105701	1105776	1105851
3 Bearing housing	1105331	1105406	1105481	1105556	1105631	1105706	1105781	1105856
4 Seal housing	1105350	1105425	1105500	1105575	1105650	1105725	1105800	1105875
5 Intermed. ring	1105347	1105422	1105497	1105572	1105647	1105722	1105797	1105872
6 Rotor R	1105336	1105411	1105486	1105561	1105636	-	-	-
7 Rotor L	1105337	1105412	1105487	1105562	1105637	-	-	-
8 Rotor K	1105338	1105413	1105488	1105563	1105638	1105713	1105788	1105863
9 Rotor F	1105339	1105414	1105489	1105564	1105639	1105714	1105789	1105864
10 Antirotat. ring	1105352	1105427	1105502	1105577	1105652	1105727	1105802	1105877
11 Butting bush	1105353	1105428	1105503	1105578	1105653	1105728	1105803	1105878
12 Cover	1105355	1105430	1105505	1105580	1105655	1105730	1105805	1105880
13 Distancer	1105357	1105432	1105507	1105582	1105657	1105732	1105807	1105882
14 Support ring	1105358	1105433	1105508	1105583	1105658	1105733	1105808	1105883
15 Elbow	1105360	1105435	1105510	1105585	1105660	1105735	1105810	1105885
20 Tap. roll. bearing	3510035	3510036	3510037	3510038	3510039	3510040	3510041	3510042
21 Groove nut, sec.	3513500	3513501	3513502	3513503	3513504	3513505	3513506	3513507
22 Mechanical seal	1501040-001	1501055-001	1501070-001	1501085-001	1501110-001	1501120-001	1501150-001	1501170-001
23 Mechanical seal	1501025-001	1501035-001	1501040-001	1501055-001	1501070-001	1501085-001	1501100-001	1501110-001
24 O-ring f. pos. 10	3511814	3511735	3511816	3511817	3511818	3511819	3511821	3511743
25 O-ring f. pos. 22	3511690	3511737	3511691	3511692	3511693	3511897	3511895	3511893
26 O-ring f. pos. 11	3511823	3511824	3511733	3511734	3511832	3511825	3511826	3511692
27 O-ring f. pos. 23	3511734	3511832	3511690	3511737	3511691	3511692	3511740	3511693
28 Flat packing	1105365	1105440	1105515	1105590	1105665	1105740	1105815	1105890
29 Flat packing	1105366	1105441	1105516	1105591	1105666	1105741	1105816	1105891
30 Shaft seal	3511975	3511976	3511978	3511980	3511983	3511984	3511986	3511988
31 Shaft seal	3511977	3511979	3511981	3511982	3511985	3511987	3511988	3511989
32 Hex screw	3500120	3500120	3500160	3500160	3500165	3500165	3500192	3500194
33 Stud bolt	3500261	3500261	3500264	3500265	3500265	3500268	3500269	3500270
34 Stud bolt	3500260	3500260	3500262	3500262	3500262	3500262	3500266	3500267
35 Set screw	3500516-002	3500516-002	3500517-002	3500517-002	3500521-002	3500521-002	3500521-002	3500521-002
36 Shaft screw	3500679-002	3500680-002	3500680-002	3500681-002	3500681-002	3500681-002	3500682-002	3500682-002
37 Hex nut	3500284	3500284	3500285	3500285	3500285	3500287	3500287	3500287
38 Hex nut	3500284	3500284	3500285	3500285	3500285	3500285	3500287	3500287
39 Lubric. nipple	3500918	3500918	3500918	3500918	3500918	3500918	3500918	3500918

Please specify exact type and designation when inquiring or ordering!

Spare parts

for design DXSB2



DN	50	65	80	100
1 Housing DN100	-	-	-	1105701-273
2 Housing DN50-80	1106312-273	1106362-248	1106412-273	-
3 Bearing housing	-	-	-	1105706-274
6 Rotor R	1105486-275	1105561-275	1105636-275	-
7 Rotor L	1150487-275	1105562-275	1105637-275	-
8 Rotor K	1105488-276	1105563-247	1105638-276	1105713-276
10 Antirrotat. ring	1105502-278	1105577-246	1105652-278	1105652
13 Support ring	3510221	3510222	3510223	3510224
14 Support ring	1106323-051	1106373-245	1106423-264	-
16 Circlip	3501235	3500873	3500693	-
17 Circlip	3501207	3501237	3501238	3501240
18 Shaft screw	3500677	3500678	3500678	-
19 Slide bearing	3510514	3510523	3510525	3510478
20 Ball bearing	3510206	3510207	3510208	3510209
21 Circlip	3501024	3501026	3501006	3501007
22 Mechanical seal	1501055-001	1501070-001	1501085-001	1501110-001
24 O-ring f. pos. 10	3511748	3511720	3511894	3511818
25 O-ring f. pos. 22	3511881	3511882	3511883	3511693
26 O-ring f. rotor	3511947	3511930	3511946	3511825
28 O-ring f. pos. 1	-	-	-	3511857
30 Shaft seal	-	-	-	3511724
31 Shaft seal	-	-	-	3509024
33 Hex screw	-	-	-	3500165
35 Hex screw	-	-	-	3500521-002
39 Lubric. nipple	3500918	3500918	3500918	3500918
40 Screw plug	3500660	3500660	3500660	3500655
41 Sealing ring	3502130	3502130	3502130	3502115-001

Please specify exact type designation when inquiring or ordering!

